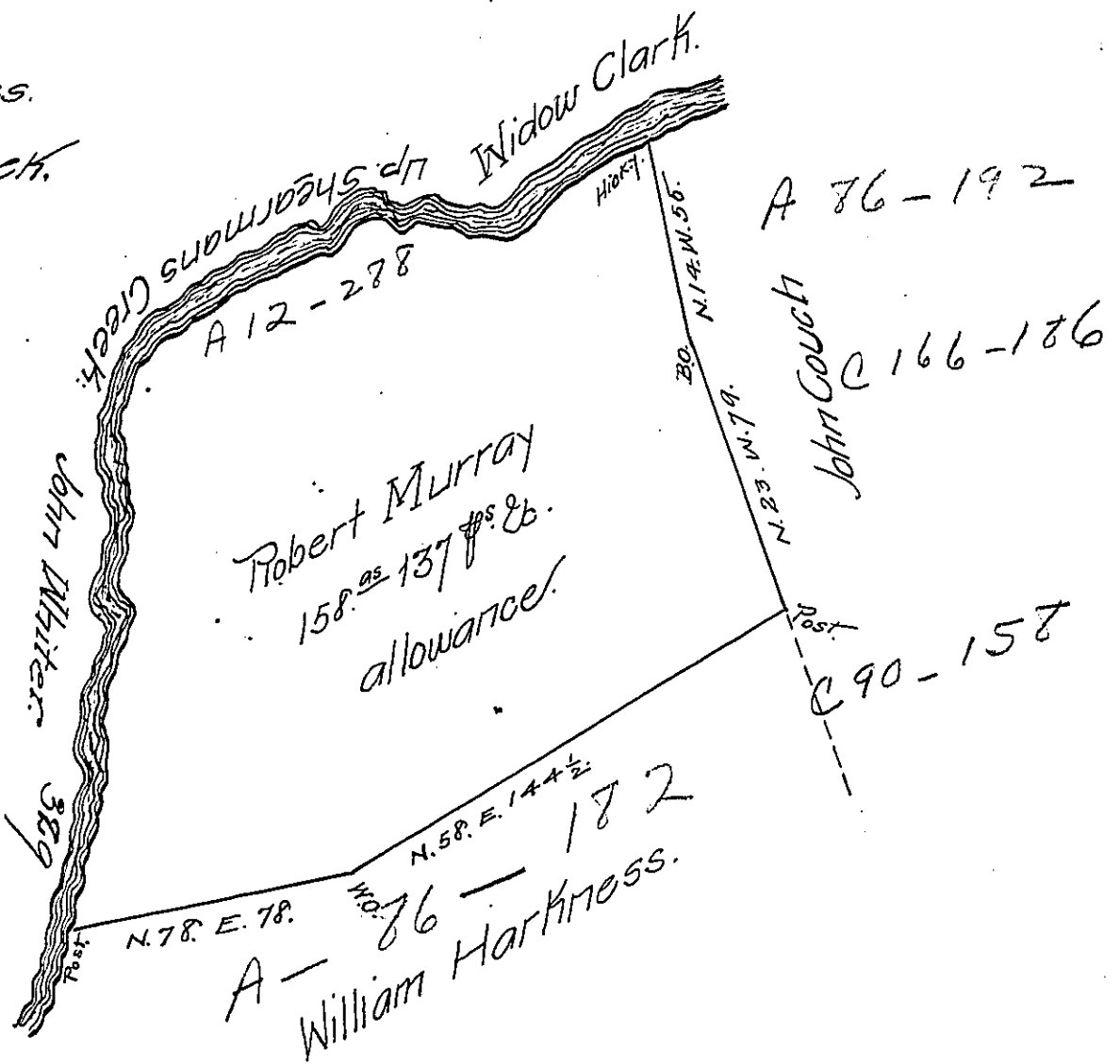


Courses & distances.
of Shearmans Creek.

- S. 62. W. 27.
- S. 50. W. 14.
- S. 57. W. 16.
- S. 82. W. 38.
- S. 70. W. 33.
- S. 83. W. 22.
- S. 44. W. 12.
- S. 3. W. 17.
- S. 20. W. 22.
- S. 21. E. 43.
- S. 15. W. 50.
- S. 3. W. 35.

329



The Draft of a tract of land Situate in Toboyne Township Cumberland
land County containing one hundred fifty eight Acres 137 perches & allow-
ance. Survey'd the 14th Feb 1816 in pursuance of an Order granted Robert
Murray dated the 9th Sept 1766 N^o 1182.

Rob^t Clark D.S.

To Rich^d T. Leech Esq^r }
Survey Gen^l of Pennsylvania }

IN TESTIMONY that the above is a copy of the original remaining on file in
the Department of Internal Affairs of Pennsylvania, made
comformably to an Act of Assembly approved the 16th day of
February 1833, I have hereunto set my hand and caused
the Seal of said Department to be affixed at Harrisburg,
this Sixth day of March 1907.

Geo. A. Brown
Secretary of Internal Affairs.